

## LINE PROPORTIONERS 02 LPC SERIES

### Features

- Corrosion Resistant Brass construction
- Custom Flow and Pressure Options available
- Optional Threaded or Flanged connections
- Optional Metering Valve for Alternative Proportioning Percentages

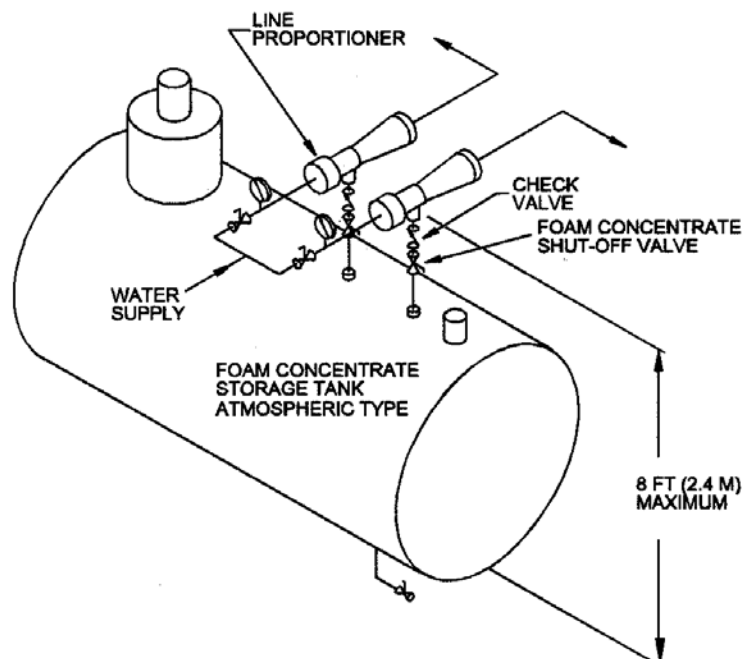


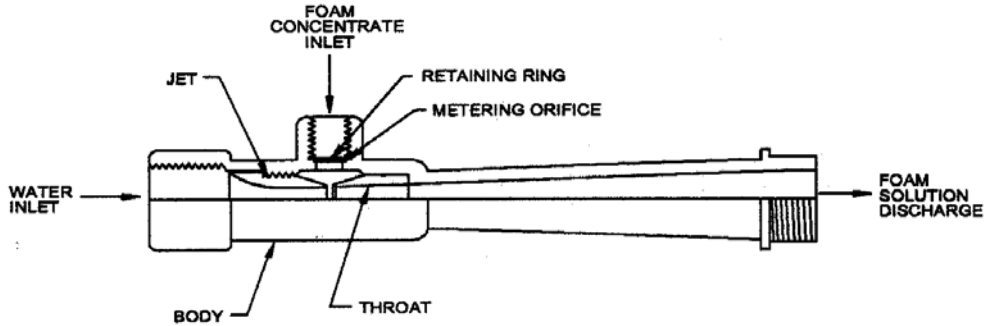
### Product Specification:

Line Proportioners (also called eductors) present a simple, cost-effective method of proportioning foam concentrate and water at the proper percentage. All proportioners are made of brass castings. Line proportioners are constant flow devices that produce an accurate proportioning of foam concentrate at a specific flow and pressure. It is therefore critical to match the line proportioner with all downstream devices, including all friction loss associated with delivering that flow to the particular nozzle(s) at the design pressure. Line proportioners are usually portable devices, however, with proper considerations they can be used in fixed system applications.

For proper operation and to achieve a respectable nozzle operating pressure, line proportioners require inlet pressures in the range of 80 - 200 psi (5.4 to 14 bar), since the friction loss through the device is approximately 35%. Care should be taken to ensure that the eductor is mounted at a maximum of 8 - 10 feet (2.4 to 3.0 metres) above the minimum expected foam liquid surface.

Line proportioners are typically used by municipal or airport fire departments where rapid, simple and cost effective deployment of a foam proportioning device is required. Other than flowing water, no external power supplies are required to operate line proportioners.





**LINE PROPORTIONER CROSS SECTION**

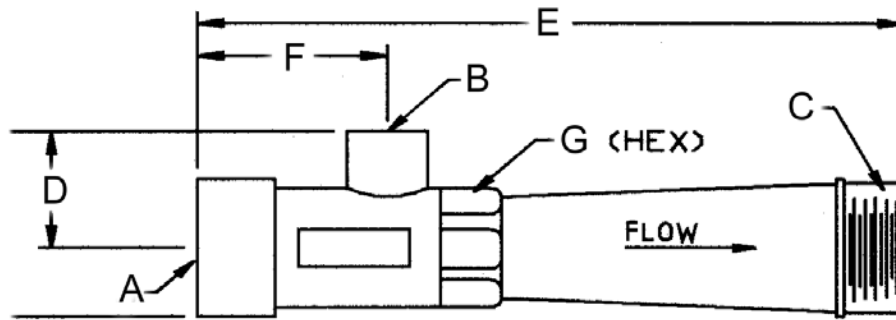
**Technical Specification**

Model	K-Factor 3%	Flow GPM (Litre/min) K-Factor 3%		K-Factor 6%	Flow GPM (Litre/min) K-Factor 6%	
		100 PSI (6.9 bar)	150 psi (10 bar)		100 PSI (6.9 bar)	150 psi (10 bar)
02 LPC120	9.5	95 (360)	116 (439)	9.8	98 (371)	120 (454)
02 LPC210	16.6	166 (629)	203 (769)	17.1	171 (648)	209 (792)
02 LPC240	19	190 (720)	233 (882)	19.6	196 (742)	240 (909)
02 LPC280	22.2	222 (841)	272 (1030)	22.9	229 (867)	280 (1060)
02 LPC350	27.7	277 (1049)	339 (1284)	28.6	286 (1083)	350 (1325)
02 LPC420	33.2	332 (1257)	407 (1541)	34.3	343 (1299)	420 (1591)
02 LPC480	38	380 (1439)	465 (1761)	39.2	392 (1485)	480 (1818)
02 LPC550	43.5	437 (1655)	533 (2018)	44.9	449 (1700)	550 (2083)
02 LPC600	47.5	475 (1799)	582 (2204)	49	490 (1856)	600 (2272)
02 LPC660	52.2	522 (1977)	639 (2420)	53.9	539 (2041)	660 (2499)
02 LPC730	57.8	578 (2189)	708 (2681)	59.6	596 (2257)	730 (2765)

For other pressures, use the following:

Formula  $Q = (K \text{ divided by the square root of } P)$

Example: Find flow of model 350 @ 180 psi when use with a 3% foam concentrate  
 Model 350 3% K-Factor 27.7  
 Square Root of PSI X 13.41  
 FLOW RATE 372 GPM @ 180 PSI  
 (1,409 Litre/min @ 12.41 bar)



### Dimensions

Model	A	B	C	E	F	G	H
	inch FNPT	inch MNPT	inch NPT	inch (mm)	inch (mm)	inch (mm)	inch (mm)
02 LPC120	2½	1	2½	2.75 (69.9)	16.13 (40.95)	4.38 (111.3)	2.50 (63.5)
02 LPC210	2½	1	2½	2.75 (69.9)	16.13 (40.95)	4.38 (111.3)	2.50 (63.5)
02 LPC240	2½	1	2½	2.75 (69.9)	16.13 (40.95)	4.38 (111.3)	2.50 (63.5)
02 LPC280	2½	1	2½	2.75 (69.9)	16.13 (40.95)	4.38 (111.3)	2.50 (63.5)
02 LPC350	2½	1	2½	2.75 (69.9)	16.13 (40.95)	4.38 (111.3)	2.50 (63.5)
02 LPC420	2½	1	3	3.11 (79)	18.38 (40.64)	4.50 (114.3)	2.75 (69.9)
02 LPC480	2½	1	3	3.11 (79)	18.38 (40.64)	4.50 (114.3)	2.75 (69.9)
02 LPC550	2½	1	3	3.11 (79)	18.38 (40.64)	4.50 (114.3)	2.75 (69.9)
02 LPC600	3	1¼	4	2.72 (69.1)	20.50 (52.07)	4.50 (114.3)	2.75 (69.9)
02LPC660	3	1¼	4	2.72 (6.91)	20.50 (52.07)	4.50 (114.3)	2.75 (69.9)
02 LPC730	3	1¼	4	2.72 (69.1)	20.50 (52.07)	4.50 (114.3)	2.75 (69.9)