

TANK COOLING NOZZLE

Model: CN (Brass) & CNS (316SS)

DESCRIPTION

The Progard Window Curtain Nozzle is a non-automatic, open sprinkler designed for use to protect windows, walls and roofs against exposure fires.

Progard Window Curtain Nozzle has a directional discharge that produces a flat fan-shaped spray pattern. When installed in a row, these nozzles can provide a water curtain that can be activated manually or automatically in a fire protection deluge system.

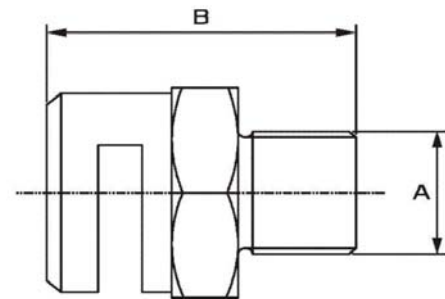
The nozzle is available in brass or stainless steel material with different K-factors.

TECHNICAL DATA

Model	: CN Brass CNS Stainless Steel
Maximum Working Pressure	: 12 bar (175 PSI)
Effective Working Pressure	: 1.4 to 3.5 bar (20–50 PSI)
End Connection	: ½" NPT
K-Factor	: K20, K32, K42, K58, K79
Finish	: Natural Brass or Stainless Steel
Weight	: 0.180 kg
Approval	: UL listed
Ordering Information	: Specify 1) Model 2) K-factor 3) Finish

INSPECTION

Only authorised technical personnel should be permitted to inspect the water spray system. All nozzles should be checked for atmospheric effects, external and internal obstructions or blockages. Nozzles should be cleaned or replaced if required. The water spray system should be tested with optimum water flow at least twice a year or as per provisions of NFPA or the local authority having jurisdiction.



Model	A	B
CN or CNS	½" NPT	44 mm

Dimensions in millimetres (approx)

MAINTENANCE

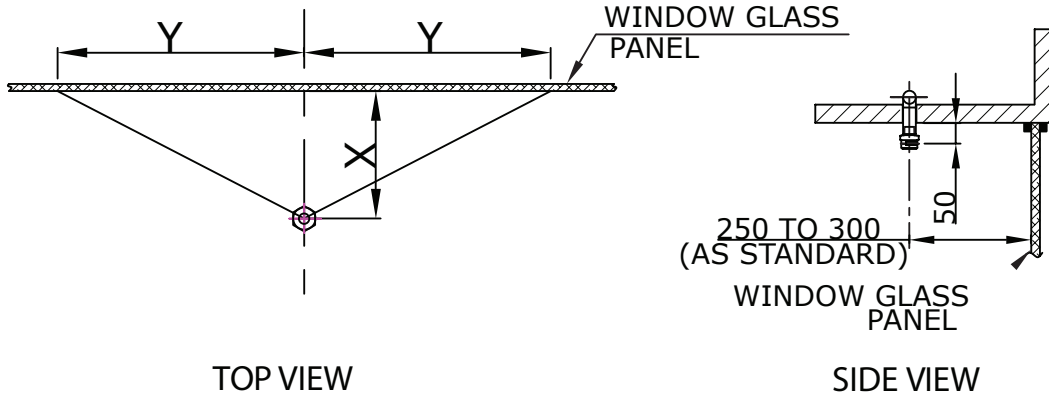
The spray nozzle must be handled with due care. For the best results, the nozzles shall be shipped or transported in their original packing.

Any nozzle found to be defective or damaged should be replaced.

To seal the male thread on the nozzle, use teflon tape or soft thread sealant. Avoid excessive torque when tightening the nozzle as it can affect the spray pattern and its performance.

TANK COOLING NOZZLE
Model: CN (Brass) & CNS (316SS)

WINDOWS CURTAIN NOZZLE SPRAY CHARACTERISTICS



		K20					
X →	250	300	600	900	1200	1500	
Pressure (PSI)	↓ Y						
7	1050	1350	2400	3300	3900	3900	
15	1800	2100	2700	4050	4050	3900	
25	3000	3000	2850	4200	4350	3900	
30	3000	3000	3000	4200	4350	4050	
50	3000	3150	3300	4500	4500	4050	
57	3000	3450	3300	4500	4500	4050	

		K32					
X →	250	300	600	900	1200	1500	
Pressure (PSI)	↓ Y						
7	1200	1800	2550	3750	3600	3600	
15	2100	2400	3000	4200	4200	3600	
25	3150	2700	3300	4500	4350	3750	
30	3300	2850	3600	4650	4500	3750	
50	3300	3300	3900	4800	4500	4050	
57	3300	3300	3900	4800	4650	4050	

		K42					
X →	250	300	600	900	1200	1500	
Pressure (PSI)	↓ Y						
7	1650	2250	2550	2775	3750	2550	
15	2400	2850	2850	3075	3900	4350	
25	3600	3300	3300	3150	4350	4500	
30	3600	3900	4200	3300	4350	4500	
50	3750	4200	4650	3450	4500	4650	
57	3900	4200	4800	3750	4500	4650	

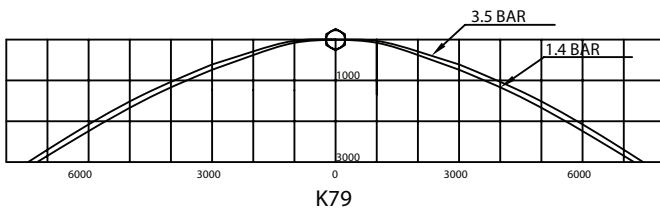
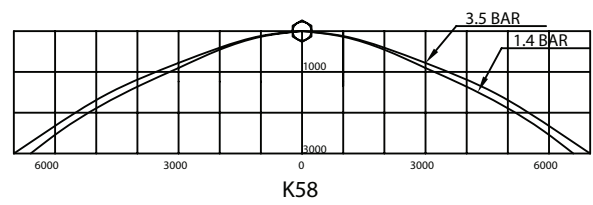
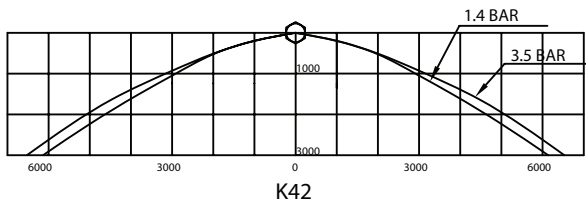
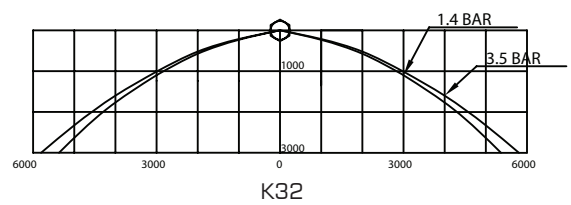
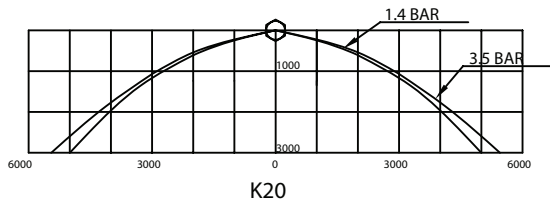
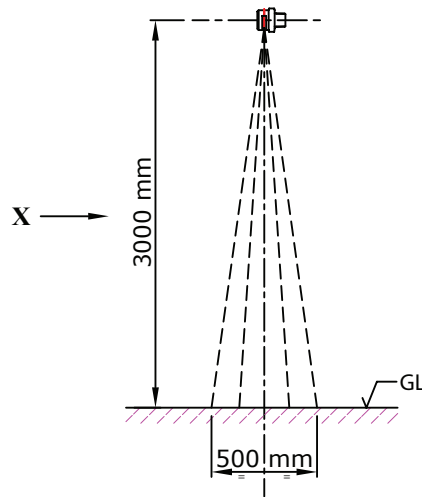
		K58					
X →	250	300	600	900	1200	1500	
Pressure (PSI)	Y ↓						
7	2100	2250	3150	3450	4050	2700	
15	2550	3000	3900	4500	4800	4350	
25	3900	4200	4200	4800	5100	4500	
30	3900	4650	4500	4800	5100	4650	
50	4200	4650	4800	4950	5400	4650	
57	4200	4650	4800	5175	5400	4800	

		K79					
X →	250	300	600	900	1200	1500	
Pressure (PSI)	↓ Y						
7	2550	2550	3450	3600	3450	2850	
15	3600	3900	4350	4350	4800	4200	
25	3900	4050	4350	4950	4950	4500	
30	4200	4500	4650	5250	5250	4500	
50	4200	4800	4800	5400	5400	4650	
57	4200	4800	4800	5400	5400	4800	

All Dimension in MM

TANK COOLING NOZZLE
Model: CN (Brass) & CNS (316SS)

SPRAY PATTERN - VERTICAL DOWNWARDS
NOZZLE INSTALLATION - HORIZONTAL (SIDEWALL)



VIEW - ' X '

SCALE: EACH SQUARE IS 1000 X 1000 MM